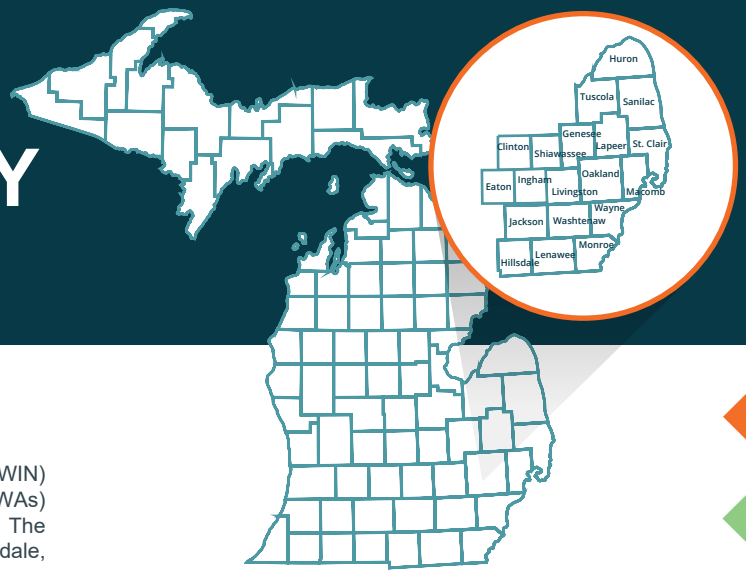


ST. CLAIR COUNTY LABOR SHED



Introduction

The Workforce Intelligence Network for Southeast Michigan (WIN) partnership is a collaboration of seven Michigan Works! Agencies (MWAs) and ten community colleges across a 19-county region in Michigan. The counties in the WIN partnership include: Clinton, Eaton, Genesee, Hillsdale, Huron, Ingham, Jackson, Lapeer, Lenawee, Livingston, Macomb, Monroe, Oakland, Saint Clair, Sanilac, Shiawassee, Tuscola, Washtenaw, and Wayne, along with the City of Detroit.

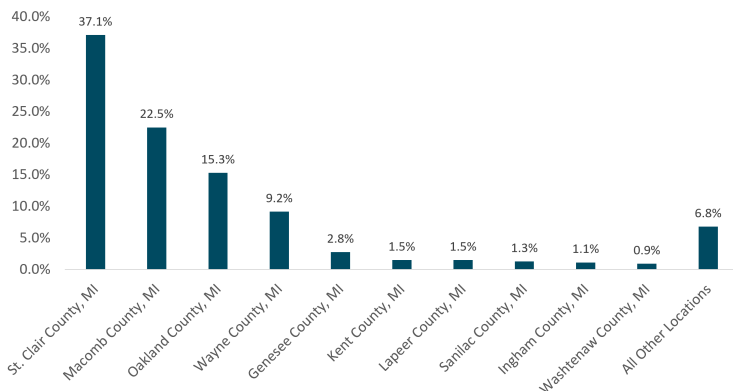
The WIN partnership region's labor shed highlights why, when it comes to talent, we must think regionally: The workforce is mobile. Although 90.4% of the region's workforce live and work¹ in the 19-county area, not all residents work in their home county. It is not uncommon for workers to commute one or two counties over for work. This means that the residents in every county should be ready for the job demands of employers hiring throughout southeast Michigan.

This document provides detailed information on where employees in the area commute to and from each day for work, how far they travel, along with other information about workers and businesses in the area. For more detail on the labor market, please see WIN's Quarterly Labor Market Report publications.

Where Residents Work

In 2019, St. Clair County's workforce consisted of 72,507 residents. 26,920 (37.1%) of the residents lived and worked within St. Clair County, while the remaining 45,587 residents (62.9%) traveled outside of the county for work. Since 2017, the number of residents that traveled outside of the county for work increased by 601 (1.3%) individuals, from 44,986 to 45,587 individuals.


In 2019, 50.5% of the county's workforce (36,613 individuals) traveled more than 25 miles to their place of employment compared to 50.2% (35,988 individuals) in 2017, an increase of 625 individuals. Macomb County was the most popular destination outside of St. Clair County for residents to find employment in 2019, with 16,309 residents or 22.5% of the county's workforce commuting, an increase of 123 residents since 2017. Oakland County employed 10,872 residents (15.2% of the county's workforce) in 2019.



Source: U.S. Census OnTheMap, 2019
Analysis: Workforce Intelligence Network


2,965
BUSINESS
ESTABLISHMENTS IN 2019


7,294
JOBS POSTED ONLINE
IN 2019


26,920
WORKERS THAT LIVED
AND WORKED IN
ST. CLAIR COUNTY

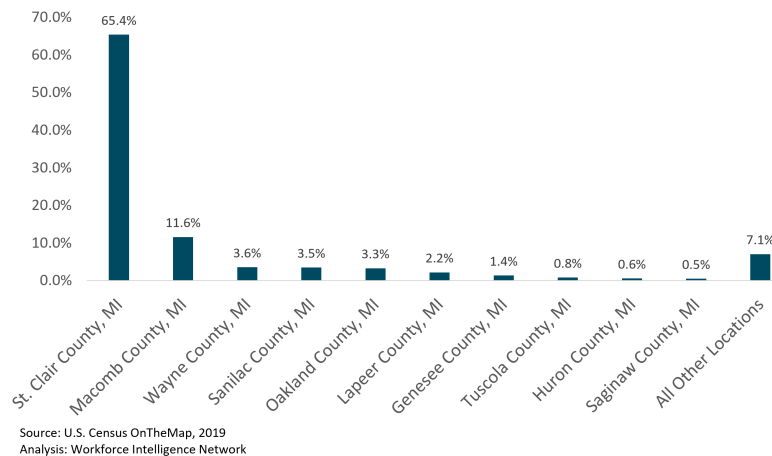

36,613
RESIDENTS TRAVELING MORE
THAN 25 MILES TO WORK



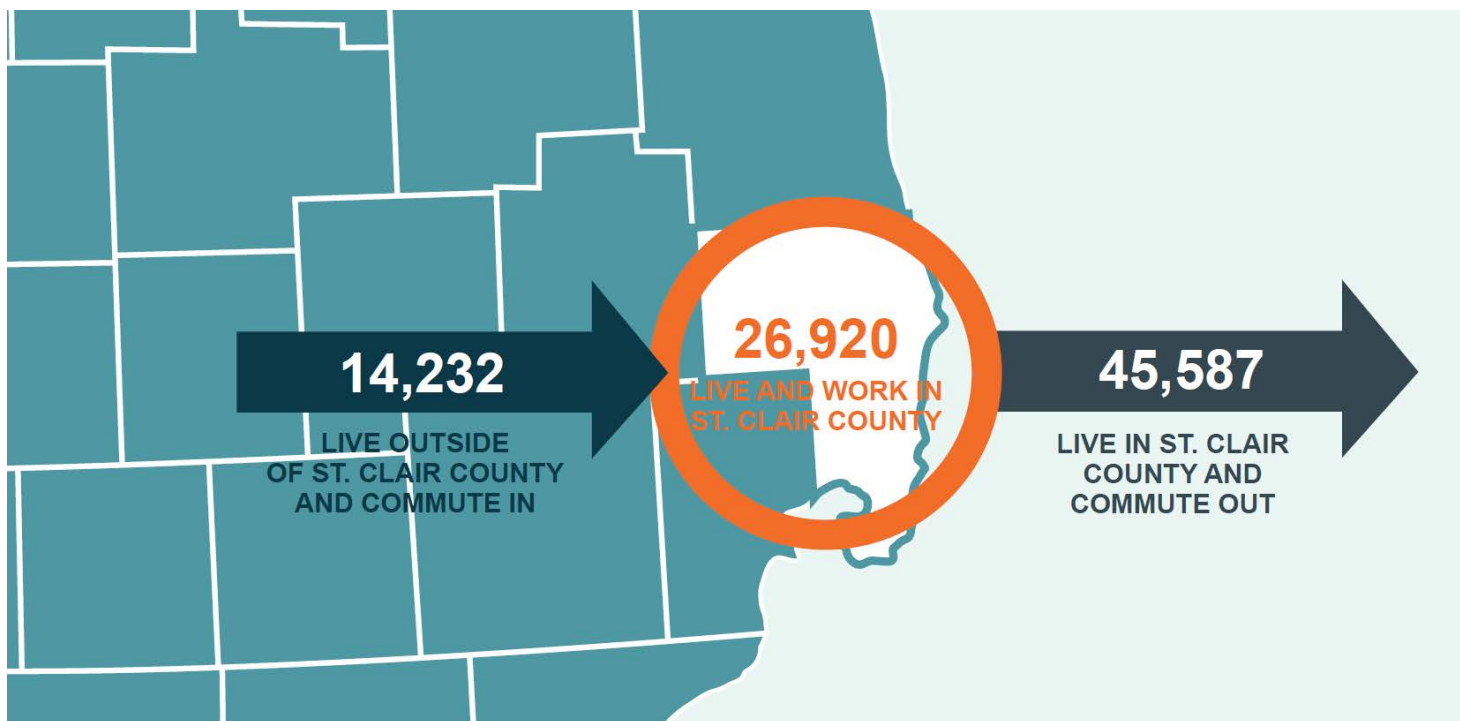
Where Workers Live

In 2019, 41,152 workers were employed in St. Clair County. 14,232 (34.6%) of those workers were employed in the county, but lived outside of its borders. Of those that traveled to St. Clair County for work, 7,252 (51.0%) of the workers were aged 30 to 54 years. This indicates a desire for experienced workers in St. Clair County. While St. Clair County employers were able to attract a sizable amount of workers in 2019, 45,587 residents (62.9% of the county's workforce) filled external jobs. Over half (51.6%) of external commuters were filled by workers between the ages of 30 and 54.

The great majority of workers that travel to St. Clair reside in either Macomb or Wayne counties. 4,781 (11.6%) of St. Clair County workers travel in from Macomb County followed by 1,473 (3.6%) that travel in from Wayne County. 10,974 (26.7%) of the 41,152 workers employed in St. Clair County traveled more than 25 miles to their place of employment in 2019.



COMMUTING PATTERN



¹This fact and labor shed statistics throughout this brief are analyzed from the U.S. Census OnTheMap, Center for Economic Studies (2019).

Data Sources: Lightcast, and U.S. Census OnTheMap
Analysis: Workforce Intelligence Network